

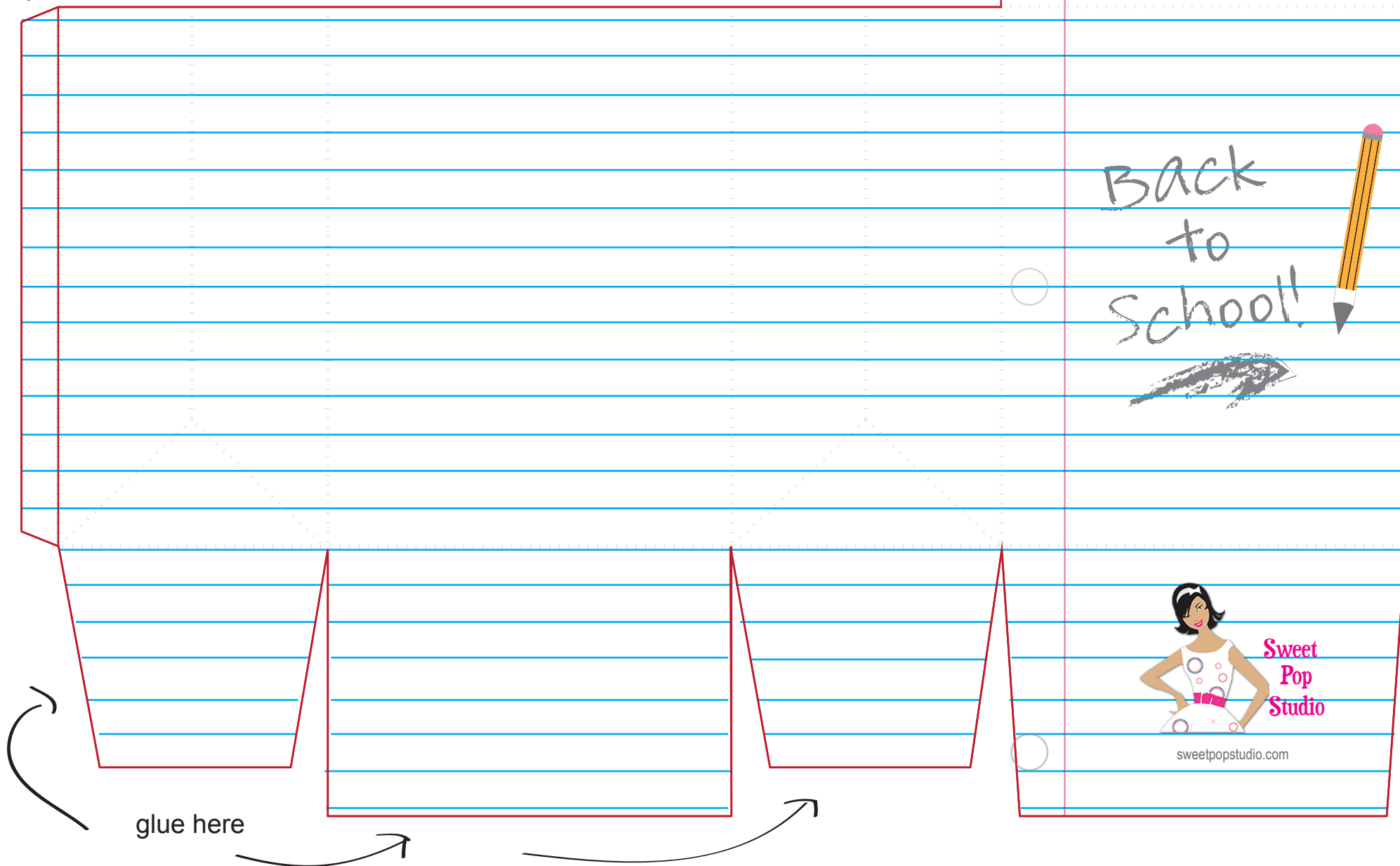
Directions:

1. Cut along outer edges of box.
2. Fold on dotted lines.
3. Glue where indicated
4. Fill with a special gift and enjoy!

Sweet Pop Studio
sweetpopstudio.com
designs@sweetpopstudio

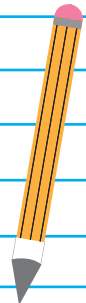
TERMS OF USE: This file is for personal use only. Mass production, selling, file sharing and commercial use of these files is not permitted. All rights reserved.

fold & glue here



glue here

Back
to
School!



Sweet
Pop
Studio

sweetpopstudio.com